

CITE 2nd Civil Infrastructure & Technology Exhibition



12 - 14 April 2016
ExCeL, London

www.cite-uk.com

The 2nd Civil Infrastructure & Technology Exhibition

Following the great success of the first Civil Infrastructure and Technology Exhibition (CITE) in 2014, this second event in the series will again provide companies in the supply chain for the UK's transport, construction, utilities and communications infrastructure sector with a unique showcase for their capabilities.

The government's National Infrastructure Plan 2014 identifies projected spending of £466 billion on 263 projects between 2014-15 and 2020-21. Newly announced programmes include £15 billion for the strategic roads network and £2.3 billion for flood defences. Energy attracts the biggest slice of investment – £274.9 billion, while transport infrastructure accounts for £142.3 billion.

The NIP says infrastructure investment could support 5,000 construction jobs for every £1 billion spent, plus as many more in design, engineering and planning. Companies nationwide of all sizes benefit – for London's Crossrail project, 62% of suppliers are based outside London and 58% are SMEs.

This is the optimistic background to CITE 2016 – the perfect venue for people throughout the supply chain to meet face-to-face and discuss opportunities for contributing to this vital growth area for the UK economy.



Why should you exhibit at CITE 2016?

- **Meet** those who are involved in the delivery of over 250 infrastructure projects in the UK that are valued at around £466 billion
- **Network** with the industry professionals that you need to connect with
- **Close deals & sell more** – visitors attend with the intention of doing business
- Exhibitions are the **second most effective means of generating sales leads** after a company's own website
- **Beat the competition** to direct sales
- **Remain "front of mind" for prospects and existing customers** – demonstrate that your company is strong and build your brand
- **Make high quality connections** – companies are being very selective with who they send to exhibitions – they only send the people that need to be there

Over 70 categories of products and services will be represented at CITE 2016, covering requirements for the development of infrastructure for transport, utilities, communications, energy and flood management that include:

- **civil engineering** • **construction services** • **geotechnical**
- **consultancy and project management** • **construction products**
- **plant and equipment** • **tunnelling** • **IT products and services**

More features – more than an exhibition.

- **Product Demonstrations**
- **Networking**
- **Innovations**
- **Education**
- **CITE & Infrarail Awards Dinner**
- **The Recruitment Wall** - helping exhibitors meet their skills needs
- **The Yard** – low cost area for the display of large machinery



CITE is co-located with the UK's definitive railway infrastructure exhibition INFRARAIL, which further increases the show's appeal to a broader industry audience.

"So far our experience of CITE has been fantastic. It's been a very busy show for us, we've met a lot of new people that we haven't seen before and we've been able to start forging relationships with them. Importantly we've been able to find out better what it is the industry wants and also get across to the industry what we can offer to it."

John Meredith, Unit Head of Rail, Imtech UK

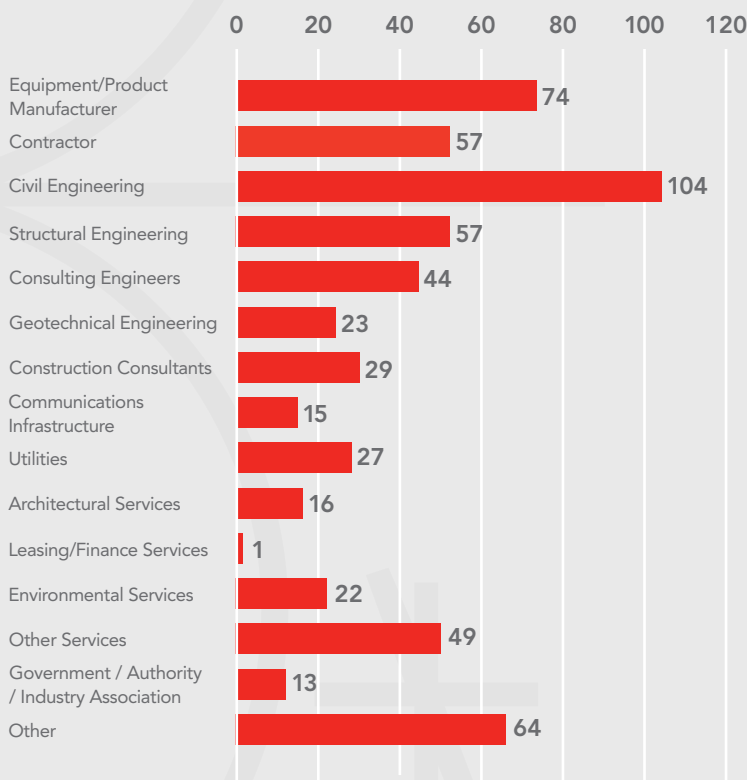
12 - 14 April 2016
ExCeL, London, UK

In all, over 6,600 industry professionals from various infrastructure sectors attended the combined CITE / Infrarail event in 2014. Their presence was welcomed by companies taking part in the show. Feedback from exhibitors was very positive regarding visitor quality and this is confirmed by data showing that some 64% of visitors possessed purchasing authority.

Over **80%** of exhibitors achieved their show participation aims and targets

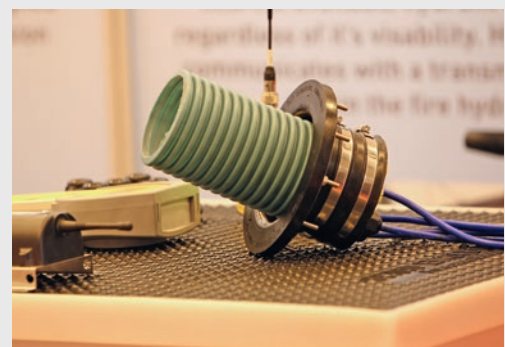
87% of exhibitors received positive business enquiries

Visitors By Nature of Organisation



Visitors By Job Role

Managing Director / Senior Director	24%
Other Director	5%
Manager / Executive / Supervisor	35%
Buyer / Specifier / Estimator	3%
Engineer / Technician	13%
Analyst / Designer / Researcher	5%
Other	15%



"Very, very good quality of visitors which has made the whole exercise very worthwhile. CITE is a very important part of our annual campaign because of the nature of the visitors and the professionalism of the show itself."

Peter Wilson, Technical Director, Echo Barrier

"CITE is critical in my opinion. It is where specifiers, consultants, engineers attend and find out what's on offer from new and innovative suppliers like ourselves. We have had a great meeting with Network Rail."

David Holmes, Technical Director, Fibrelite

Exhibiting Prices

Floor space only	£305 per square metre
Unfurnished Shell Scheme (Includes: wall panels, stand carpet, electric socket, fascia with stand number and company name, spot lights) <i>Please note that there will be an additional charge of £15 per stand for electrical testing</i>	£405 per square metre
Furnished Shell Scheme (Includes: electric socket, wall panels, stand carpet, fascia with stand number and company name, spot lights, furniture package depending on stand size) <i>Please note that there will be an additional charge of £15 per stand for electrical testing</i>	£428 per square metre

Contact the CITE 2016 team to discuss options and availability and book your space

Kirsten Whitehouse Exhibition Manager
kirsten.whitehouse@mackbrooks.co.uk

Emma Preston Exhibition Executive
emma.preston@mackbrooks.co.uk

Natalie Parker Exhibition Executive
natalie.parker@mackbrooks.co.uk

Michael Wilton, Exhibition Director
michael.wilton@mackbrooks.co.uk

CITE 2nd Civil Infrastructure
& Technology
Exhibition



CITE 2016, Mack Brooks Exhibitions Ltd, Romeland House, Romeland Hill, St. Albans, Herts AL3 4ET, United Kingdom
Tel: +44 (0) 1727 814400 Fax: +44 (0) 1727 814401

www.cite-uk.com

Mack Brooks Exhibitions Ltd runs successful infrastructure events throughout the world, including the world's leading airport exhibition, Inter Airport Europe, Inter Airport China and Inter Airport India, plus INTERtunnel shows covering tunnelling technology in Italy and Russia. Mack Brooks Exhibitions' experience in running events that are vital to infrastructure services throughout the world, in addition to the knowledge gained from 20 years of rail infrastructure exhibitions, provides a solid domestic and international base for CITE 2016.